

## Anti-IRS1 antibody (580-660) Cat#NB-22-3773 Size: 20ug,50ug,200ug

### GENERAL INFORMATION

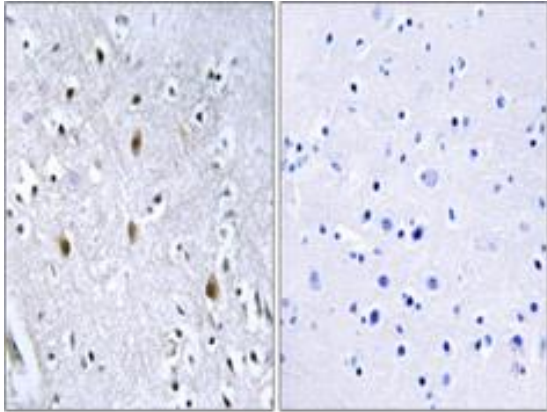
<b>Product Type</b>	Primary antibodies
<b>Short Description</b>	Rabbit polyclonal antibody anti-Insulin Receptor Substrate 1 (580-660) is suitable for use in Western Blot, Immunohistochemistry, Immunofluorescence and ELISA research applications.
<b>Description</b>	
<b>Applications</b>	WB, IHC-P, IF-P, ELISA
<b>Host/Source</b>	Rabbit
<b>Reactivity</b>	Human, Mouse, Rat

### PRODUCT PROPERTIES

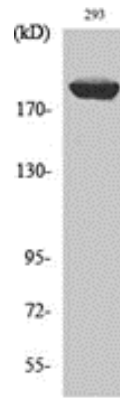
<b>Clonality</b>	Polyclonal
<b>Clone ID</b>	
<b>Concentration</b>	1 mg/mL
<b>Conjugation</b>	Unconjugated
<b>Purification</b>	The antibody was affinity-purified from rabbit anti-serum by affinity-chromatography.
<b>Dilution Range</b>	WB 1:500-1:2000 IHC 1:100-1:300 ELISA 1:20000
<b>Formulation</b>	PBS, 50% Glycerol, 0.5% BSA and 0.02% Sodium Azide.
<b>Isotype</b>	IgG
<b>Storage Instruction</b>	Store at -20°C for up to 1 year from the date of receipt, and avoid repeat freeze-thaw cycles.

### TARGET INFORMATION

<b>Gene ID</b>	<a href="#">3667</a>
<b>Gene Symbol</b>	<a href="#">IRS1</a>
<b>Uniprot ID</b>	<a href="#">IRS1_HUMAN</a>
<b>Immunogen</b>	The antiserum was produced against synthesized peptide derived from human IRS-1 at amino acid range 605-654 580-660
<b>Immunogen Region</b>	
<b>Specificity</b>	IRS1 polyclonal antibody (Insulin Receptor Substrate 1) binds to endogenous Insulin Receptor Substrate 1 at the amino acid region 580-660
<b>Immunogen Sequence</b>	



Immunohistochemistry analysis of paraffin-embedded human brain tissue, using IRS-1 Antibody. The picture on the right is blocked



Western blot analysis of various cells using IRS-1 Polyclonal Antibody diluted at 1 : 500

For reference only