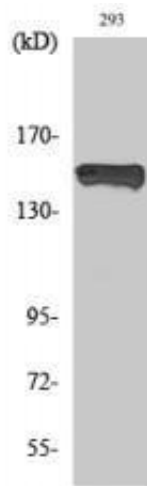


## Phospho-PLC gamma1 (Y783) antibody

Cat# NB-22-0394 (100 ul)

Cat# NB-22-0394-S (20 ul)



Western Blot (WB) analysis of specific cells using Phospho-PLC gamma1 (Y783) Polyclonal Antibody

### Description

Rabbit Polyclonal to Phospho-PLC  $\gamma$ 1 (Y783).

### Product Information

<b>Code</b>	NB-22-0394
<b>Host</b>	Rabbit
<b>Reactivity</b>	Human, Monkey, Mouse, Rat
<b>Applications</b>	ELISA, IHC, WB
<b>Immunogen</b>	Synthesized peptide derived from human PLC $\gamma$ 1 around the phosphorylation site of Y783.
<b>Gene ID</b>	5335 (Human) / 18803 (Mouse) / 25738 (Rat)
<b>Dilution range</b>	WB 1:500-1:2000 / IHC 1:100-1:300 / ELISA 1:10000

<b>Specificity</b>	Phospho-PLC $\gamma$ 1 (Y783) Polyclonal Antibody detects endogenous levels of PLC $\gamma$ 1 protein only when phosphorylated at Y783.
<b>Purification</b>	The antibody was affinity-purified from rabbit antiserum by affinity-chromatography using epitope-specific immunogen.
<b>Protein Name</b>	1-phosphatidylinositol 4,5-bisphosphate phosphodiesterase gamma-1 - PLCG1 - PLC148 - PLC-II - PLCgamma1 - NCKAP3 - PLC1 - phospholipase C gamma 1
<b>Clonality</b>	Polyclonal
<b>Conjugation</b>	Unconjugated
<b>Isotype</b>	IgG
<b>Formulation</b>	Liquid in PBS containing 50% glycerol, 0.5% BSA and 0.02% sodium azide.
<b>Concentration</b>	1 mg/ml
<b>Storage Instruction</b>	Store at -20°C, and avoid repeat freeze-thaw cycles

## Target

<b>Database Links</b>	Human UniProt/Swiss-Prot: <a href="#">P19174</a> Mouse UniPort/Swiss-Prot: <a href="#">Q62077</a> Rat UniProt/Swiss-Port: <a href="#">P10686</a> Human Entrez Gene: <a href="#">5335</a> Mouse Entrez Gene: <a href="#">18803</a> Rat Entrez Gene: <a href="#">Rn.11243</a>
-----------------------	--

<b>Alternative Names</b>	PLCG1 / phospholipase C gamma 1 / 1-phosphatidyl-D-myoinositol-4 / 5-bisphosphate antibody / 1-phosphatidylinositol 4 / 5-bisphosphate phosphodiesterase gamma-1 antibody / 1-phosphatidylinositol-4 / 5-bisphosphate phosphodiesterase gamma 1 antibody / 1-phosphatidylinositol-4 / 5-bisphosphate phosphodiesterase gamma-1 antibody / 1-phosphatidylinositol-4 / 5-bisphosphate phosphodiesterase gamma-1-like protein antibody / A306_00291 antibody / AS27_09730 antibody / AS28_13697 antibody / CB1_001108085 antibody / Cded antibody / cell differentiation and embryonic development antibody / D623_10025212 antibody / dead beat antibody / ded antibody / EH28_23772 antibody / eukaryotic translation initiation factor 2 subunit 2 antibody / fj46f04 antibody / H920_08344 antibody / hypothetical protein antibody / I79_015398 antibody / inositoltrisphosphohydrolase antibody / M91_19131 antibody / M959_06620 antibody / MDA_GLEAN10017190 antibody / monophosphatidylinositol
--------------------------	---

phosphodiesterase antibody / N300\_03285 antibody / N301\_08028 antibody / N302\_00197 antibody / N303\_13165 antibody / N305\_03189 antibody / N306\_07759 antibody / N307\_07045 antibody / N308\_10728 antibody / N309\_09801 antibody / N310\_08434 antibody / N321\_07406 antibody / N322\_11062 antibody / N324\_00977 antibody / N326\_05576 antibody / N327\_10702 antibody / N328\_05826 antibody / N330\_07677 antibody / N336\_02748 antibody / N340\_07614 antibody / nckap3 antibody / PAL\_GLEAN10024338 antibody / PANDA\_006986 antibody / phosphatidylinositol phospholipase C antibody / phosphoinositidase C antibody / phosphoinositide phospholipase C antibody / phosphoinositide phospholipase C-gamma-1 antibody / phospholipase C-148 antibody / phospholipase C-gamma-1 antibody / phospholipase C / gamma 1 antibody / phospholipase C-gamma-1b antibody / phospholipase C / gamma 1 (formerly subtype 148) antibody / phospholipase C-II antibody / Plc-1 antibody / PLC1 antibody / PLC148 antibody / PLC-148 antibody / Plcg-1 antibody / Plc-gamma1 antibody / PLCgamma1 antibody / PLC gamma 1 antibody / PLC-gamma-1 antibody / plc-ii antibody / PPLCA antibody / TREES\_T100008680 antibody / triphosphoinositide phosphodiesterase antibody / UY3\_04585 antibody / Y1Q\_029280 antibody / Y956\_12318 antibody / Z169\_03750 antibody

## Function

Mediates the production of the second messenger molecules diacylglycerol (DAG) and inositol 1,4,5-trisphosphate (IP3). Plays an important role in the regulation of intracellular signaling cascades. Becomes activated in response to ligand-mediated activation of receptor-type tyrosine kinases, such as PDGFRA, PDGFRB, FGFR1, FGFR2, FGFR3 and FGFR4. Plays a role in actin reorganization and cell migration.

## Sequence and Domain Family

The SH3 domain mediates interaction with CLNK (By similarity). The SH3 domain also mediates interaction with RALGPS1.

## Post-translational Modifications

Tyrosine phosphorylated in response to signaling via activated FLT3, KIT and PDGFRA (By similarity). Tyrosine phosphorylated by activated FGFR1, FGFR2, FGFR3 and FGFR4. Tyrosine phosphorylated by activated FLT1 and KDR. Tyrosine phosphorylated by activated PDGFRB. The receptor-mediated activation of PLCG1 involves its phosphorylation by tyrosine kinases, in response to ligation of a variety of growth factor receptors and immune system receptors. For instance, SYK phosphorylates and activates PLCG1 in response to ligation of the B-cell receptor. May be dephosphorylated by PTPRJ. Phosphorylated by ITK and TXK on Tyr-783 upon TCR activation in T-cells. ; Ubiquitinated by CBLB in activated T-cells.

---

**Cellular Localization** Cell projection, lamellipodium. Cell projection, ruffle.  
Note=Rapidly redistributed to ruffles and lamellipodia structures in response to epidermal growth factor (EGF) treatment.

*For reference only*

*For Research Use Only. Not for Diagnostic or Therapeutic Use.*

For reference only