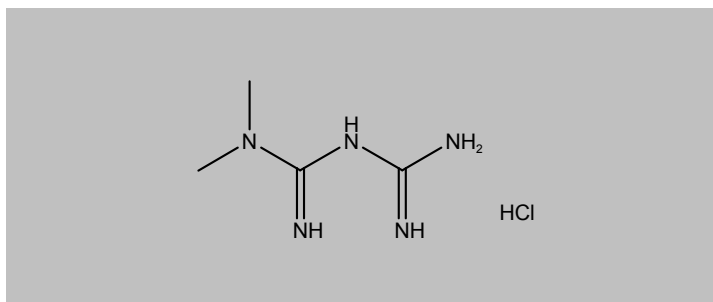


Certificate Of Analysis
Quality Control Testing and Research ApplicationCOA Preparation Date: 07/11/2016
COA Revision Date: 07/11/2019

Product: Metformin hydrochloride
Cat. No.: BG0401
Batch No.: 0401BG/01
Chemical Name: 1,1-Dimethyl-biguanide hydrochloride

1. PHYSICAL AND CHEMICAL PROPERTIES

Batch Molecular Formula: C₄H₁₁N₅ .HCl
Batch Molecular Weight: 165.62
CAS No.: [1115-70-4]
Physical Appearance: White crystalline powder
Melting Point: 223 - 226° C
Solubility: Soluble in water
Storage: RT
Batch Molecular Structure:

**Product Description:**

A Biguanide hypoglycemic agent used in the treatment of non-insulin-dependent diabetes mellitus not responding to dietary modification. It improves glycemic control by improving insulin sensitivity and decreasing intestinal absorption of glucose. Recently it was shown that it is a potent inhibitor of cell proliferation in endometrial cancer cell lines. This effect is partially mediated through AMPK activation and subsequent inhibition of the mTOR pathway. It acts on τ phosphorylation via mTOR/protein phosphatase 2A (PP2A) signaling, suggesting a potential beneficial role of Metformin in the prophylaxis and / or therapy of AD.

References:

1. Hess and Sullivan (2004) Ann Pharmacother 38:1283; 2. Cantrell et al. (2010) Gynecol Oncol 116:92; 3. Brown et al. (2010) Breast Cancer Res Treat 123:591; 4. Kickstein et al. (2010) Proc Natl Acad Sci USA 107:21830; 5. Kato et al. (2012) Mol Cancer Ther 11:549

- CAUTION - Not fully tested. For Research use only. Not for human use. -

Certificate Of Analysis

Quality Control Testing and Research Application

COA Preparation Date: 07/11/2016
COA Revision Date: 07/11/2019

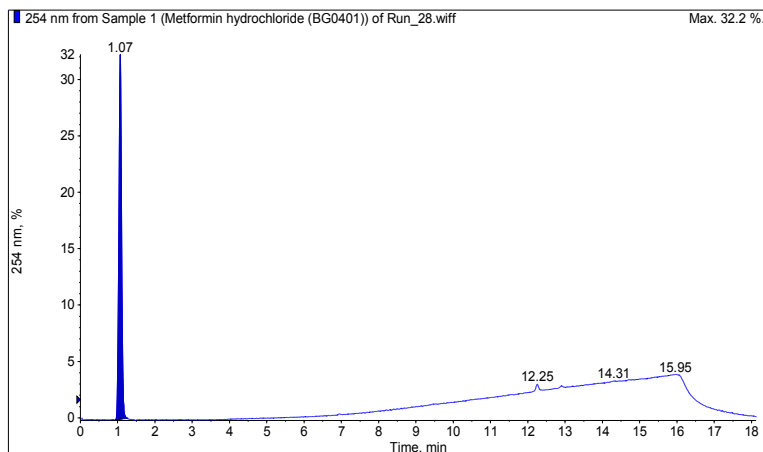
BG0401 Metformin hydrochloride

2. ANALYTICAL DATA

HPLC: corresponds to the reference

MS: corresponds to the reference

Tests: Loss on drying: 0.06% (complies); Residue on ignition: < 0.1% (complies);
Heavy Metals: < 10 ppm (complies); HPLC Assay: 99.0% (complies).
Conforms to USP28.



- CAUTION - Not fully tested. For Research use only. Not for human use. –