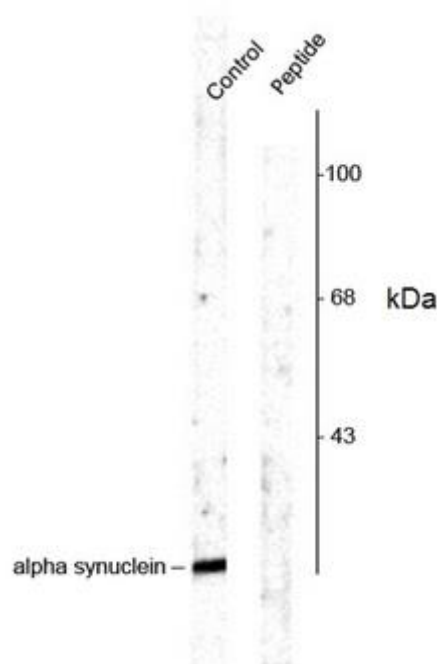


## Rabbit Anti-alpha SYNUCLEIN (pSer129)

Cat # NB-47-01220-100UL size: 100µl



Western blot of rat cortex lysate showing phospho-specific labeling of the ~15 kDa alpha synuclein protein phosphorylated at Ser<sub>129</sub> using Rabbit anti Mouse alpha synuclein (pSer129) antibody

### Description

Rabbit anti Rat alpha synuclein (pSer129) antibody recognizes alpha synuclein when phosphorylated at serine 129. Alpha synuclein is a 140 amino acid, ~15 kDa protein seen predominantly in the neocortex, hippocampus, substantia nigra, thalamus and cerebellum. Its normal cellular function has not been definitively determined, but it is thought to be involved in the regulation of neuronal plasticity, dopamine neurotransmission and other membrane-associated processes at the presynaptic terminal.

Alpha synuclein is normally a soluble, unfolded protein, but it can aggregate at high concentrations to form insoluble fibrils which, in association with other proteins such as ubiquitin, neurofilament protein and alpha B crystalline, form Lewy bodies. Lewy bodies are a hallmark pathological feature of Parkinson's disease and other neurodegenerative diseases. Alpha synuclein has several possible phosphorylation sites, serine 129 in particular can be phosphorylated by G-protein-coupled receptor kinases and this phosphorylation promotes formation of alpha synuclein filaments, with hyperphosphorylation of serine129 seen in Lewy bodies.

### Product Information

<b>Host:</b>	Rabbit
<b>Applications:</b>	WB
<b>Reactivity:</b>	Rat
<b>Crossreactivity:</b>	Mouse, Dog, Primate, Human, Bovine Expected from Sequence
<b>Clonality:</b>	Polyclonal

---

<b>Conjugation:</b>	Unconjugated
<b>Formulation:</b>	10mM Hepes pH7.5, 150mM NaCl, 0.09% Sodium Azide (NaN <sub>3</sub> ), 50% Glycerol and 0.01% Bovine Serum Albumin.
<b>Purification:</b>	Antisera to Alpha Synuclein (pSer129) were raised by repeated immunisations of rabbits with highly purified antigen. Purified IgG prepared by affinity chromatography.
<b>Dilution Range:</b>	1/1000
<b>Storage Instruction:</b>	It is recommended to aliquot and store at -20°C on receipt. When thawed, aliquot the sample as needed. Keep aliquots at 2-8°C for short term use (up to 4 weeks) and store the remaining aliquots at -20°C.  Avoid repeated freezing and thawing as this may denature the antibody. Storage in frost-free freezers is not recommended.

## Target

---

<b>RRID</b>	AB_2192961
<b>UniProt</b>	P37377
<b>Entrez Gene</b>	Snca
<b>Immunogen:</b>	Synthetic phosphopeptide corresponding to amino acid sequence surrounding phosphorylated serine 129 of Alpha Synuclein.

*For reference only*

*For Research Use Only. Not for Diagnostic or Therapeutic Use.*